

1. Historic District Commission Regular Meeting Agenda (PDF)

Documents:

[20220328 HDC AGENDA \(AD\).PDF](#)

2. 20220328 HDC Packet

Documents:

[20220328 1 LOCK ST.PDF](#)



City of Nashua
Planning Department
229 Main Street
Nashua, New Hampshire 03061-2019

Planning & Zoning 589-3090
Fax 589-3119
WEB www.nashuanh.gov

March 14, 2022

The following is to be published on ROP March 20, 2022, under the Seal of the City of Nashua, Public Notice Format 65 MP 51.

Notice is hereby given that a Public Hearing of the City of Nashua Historic District Commission will occur on Monday, March 28, 2022, at 6:30 P.M. in Room #208 at the Nashua City Hall located at 229 Main Street, Nashua, NH AND via Zoom at the link below. Members of the public can submit their comments via email (planningdepartment@nashuanh.gov) or by mail (please make sure to include your name/address and comments) by 5:00 p.m. on March 28, 2022 and read into the record at the appropriate time. Letters should be addressed to City of Nashua, Planning Department, P.O. Box 2019, Nashua, NH 03061. Plans can be viewed online starting March 24, 2022 at www.nashuanh.gov in the Calendar or Agendas and Minutes.

To access Zoom Meeting:

<https://us02web.zoom.us/j/84459410181?pwd=UzQwK3kveFFuay9ZQkdpRzljOCtFZz09>

Meeting ID: **844 5941 0181**

To join by phone: 1 (929) 436-2866

If you are not able to connect to Zoom, please contact the Planning Department at (603) 589-3056.

1. Robert A. McIntosh, Jr. LLC d/b/a Davis Funeral Home (Owner) Robert A. McIntosh (Applicant) 1 Lock Street (Sheet 43 Lot 29) requesting the following: 1) to install a 12' long, 8' high, 8' wide awning over building entrance walkway on Lock Street side, 2) add gas lanterns to front and side entrances, and 3) to install sign from National Register of Historic Places, by Department of Interior. RA Zone, Ward 3.

Other Business:

1. Review of Minutes for previous hearings/meetings.
2. Communications.

3. Discussion item:

"SUITABLE ACCOMMODATIONS FOR THE SENSORY IMPAIRED WILL BE PROVIDED UPON ADEQUATE ADVANCE NOTICE."



City of Nashua
Planning Department
 229 Main Street
 Nashua, New Hampshire 03061-2019

Planning & Zoning 589-3090
 WEB www.nashuanh.gov

HISTORIC DISTRICT COMMISSION APPLICATION

PLEASE NOTE: INCOMPLETE OR ILLEGIBLE APPLICATIONS WILL BE RETURNED TO APPLICANT.

Location Davis Funeral Home. 1 Lock Street Nashua NH 03064
 Zoning District historic Sheet 0043 Lot 00029 Property Acct# 1,190
 Property Owner (print name) Robert A McIntosh Jr
 Owner's Signature Robert A McIntosh Date 3-7-2022
 Owner's Address 1 Lock Street Nashua NH 03064
 Telephone Number H: 883-3401 C: 603-305-8092 E-mail info@davisfuneralhome
 Applicant (print name) Robert A McIntosh Jr LLC nh.com.
 Applicant's Signature Robert A McIntosh Date 5-21-2021
 Applicant's Address same as above
 Telephone Number H: As above C: As above E-mail info@davisfuneralhome
 Proposed Work: Add awning to side entrance nh.com.
Add Gas lantern(s) to front & side entrance.
Add sign from National Register of Historic Places. by Dept of Interior.

Construct	<input type="checkbox"/>	Repair	<input type="checkbox"/>	Add Signage	<input checked="" type="checkbox"/>	Demolish	<input type="checkbox"/>
Alter	<input type="checkbox"/>	Replace	<input type="checkbox"/>	Change Signage	<input type="checkbox"/>	Other	<input checked="" type="checkbox"/>

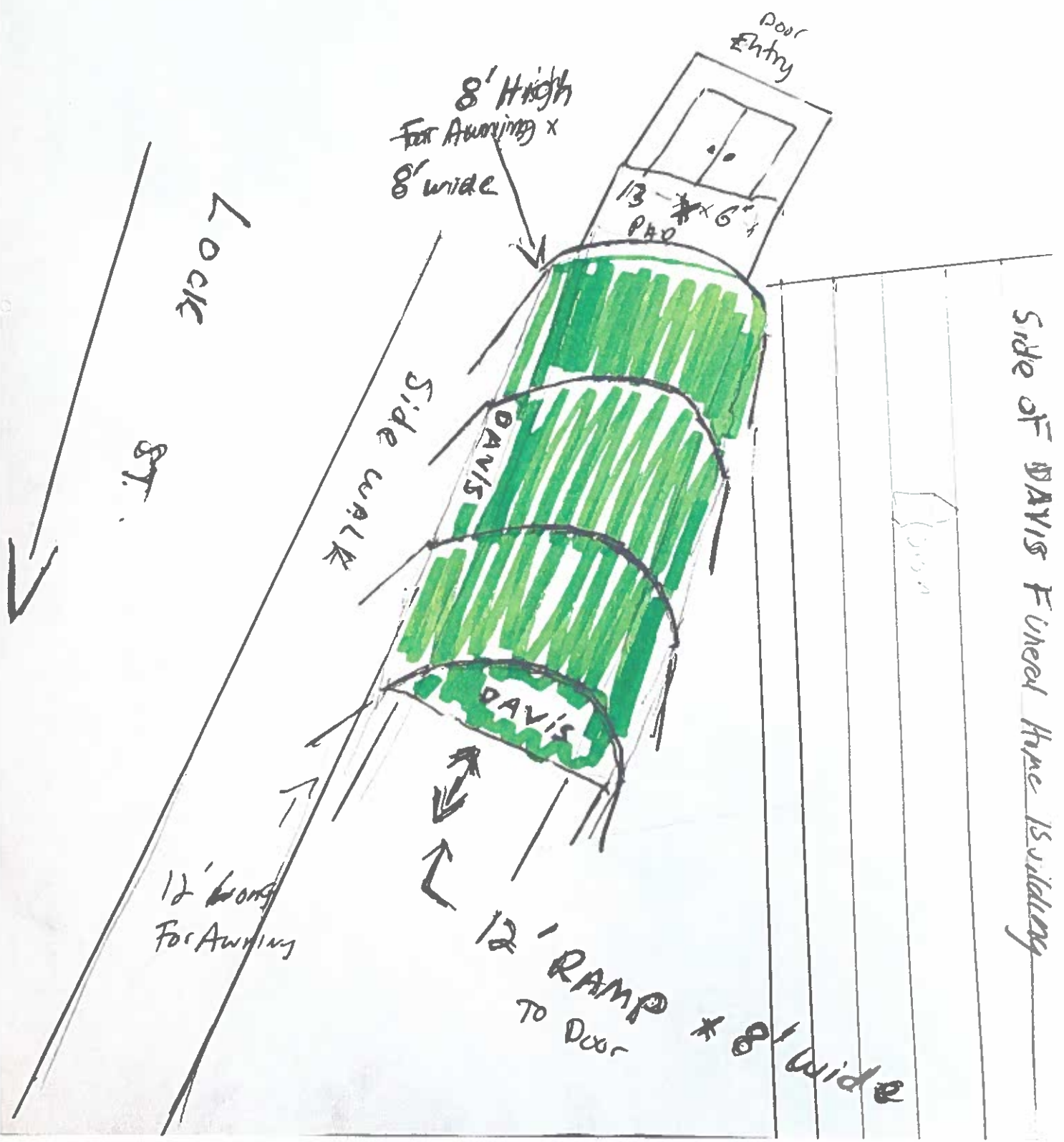
At the 3-28-22 Historic District Commission (HDC) meeting, the above application was:
 Approved Disapproved Tabled Postponed

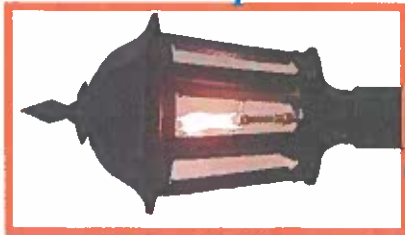
The HDC found the proposed: Does / Does Not meeting the requirements of the regulations for the District. The following stipulations shall apply:

Chairman/designee _____ Date _____

OFFICE USE ONLY Date Received _____ Date of hearing 3/28/22 Application checked for completeness: CF
~~FEET~~ A22-0040 Board Action _____
 \$ _____ application fee \$ _____ signage fee Date Paid _____ Receipt # _____

would like to Add a 12' Long x 8' High x
8' wide Awning on our RAMP entrance located
AT The Davis Funeral Home, 1600k ST. NASHUA





Knightronix KnightLighter™ Gas Light Igniter KNA1-24AI-F-S-(O)

24VAC (Open Flame) Igniter with Ion Flame Sensor
and Complementary Photo-Flame Sensor; Switch
Controlled - Without Daylight Sensor

QuickStart Installation and Operating Instructions



ONE YEAR LIMITED WARRANTY ON GAS LIGHT IGNITER

Knightronix, Inc. will repair or replace, at its discretion, any KnightLighter™ gas light igniter which, in normal use, has proven to be defective in workmanship or material, provided that the customer returns the product prepaid to Knightronix with proof of purchase, within one year of shipment. Knightronix shall have reasonable opportunity to verify the alleged defect by inspection. Knightronix shall not be responsible for any asserted defect, which has resulted from improper installation, hook-up, misuse, abuse, or alteration. Knightronix shall not be responsible for cost of removal/installation or for damage resulting there from. Under no circumstances shall Knightronix be liable for incidental or consequential damage or cost resulting from any defective products. This warranty is the sole warranty and sets forth the customer's exclusive remedy, with respect to defective products. All other warranties, expressed or implied, whether of merchantability, fitness for purpose or otherwise, are disclaimed by Knightronix. Knightronix is not responsible for any injury or mishap related to misuse, abuse or lack of judgment in installing or operating of the igniter/burner within a gas light or the integrated gas light installation.

A Return Authorization Number is required. Upon issue of the number, the defective product may be returned prepaid by the customer for repair or replacement at Knightronix discretion. Knightronix is not responsible for removal or reinstallation of the warranted products.

Knightronix will provide phone or e-mail support for customer or on-site technical personnel. For questions regarding the igniter/burner operation, maintenance, or returns call 651 636-1008 or e-mail ignitersupport@knightronix.com. More support documents are available on our web store site: http://www.vulcanlighting.com/catalog/igniter_install_help_files.php

Knightronix, Inc.

2212 Silver Lake Rd. New Brighton, MN 55112 USA.

Phone (651) 636-1008 Fax (651) 636-0211

Web: <http://www.knightronix.com> Email: info@knightronix.com



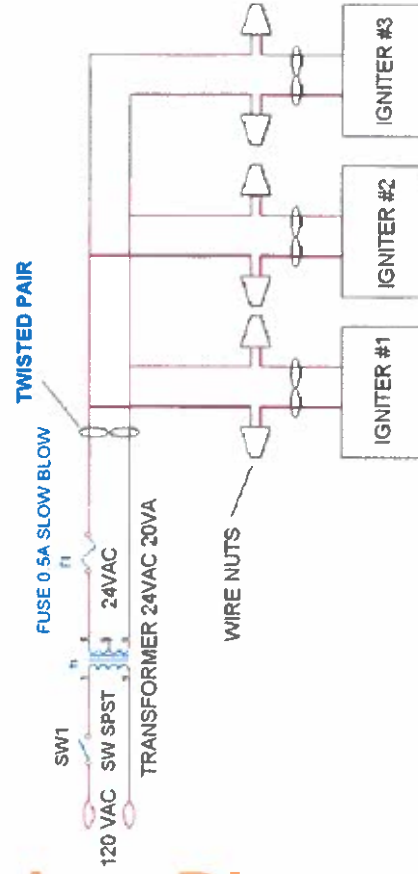
CAUTION IMPORTANT NOTICE

- CONNECT IGNITER POWER TO 24 VAC POWER ONLY; NEVER CONNECT TO 120 VAC.
- DO NOT SHORT 24 VAC IGNITER INPUT POWER LEADS TO GAS LIGHT CHASSIS.
- KEEP PHOTO-SENSOR LEADS WELL SEPARATED (>.75 INCH) FROM THE HIGH VOLTAGE SPARK LEAD.

ALL WARRANTIES ARE VOID IF THE
ABOVE INSTRUCTIONS ARE VIOLATED.

Hookup Diagram

MODEL: KNA1-24AI-F-S HOOK UP DIAGRAM



IMPORTANT INFORMATION FOR END USER INSTALLER

- **USE WITH 24 VAC TRANSFORMER ONLY**
- Connecting directly to 120VAC or hooking up transformer backwards will damage unit and void warranty
- **DO NOT** short 24V wires to chassis or earth ground**
- It is recommended that an inline fuse be installed at the transformer in one of the 24 VAC input lines

**It is highly recommended that an ohmmeter be used to verify isolation between the 24V input wires and the igniter case before powering up igniter unit.

For questions and technical support please call 651-636-1008.

ATTENTION: Ion Sensor Mode is designed to operate using open flame burners that have all-brass tips. For all other types of burners, the photo-flame sensor must be uncovered.

24VAC Gas Light Igniter with Ion Flame Sensor Model: KNA1-24AI-F-S-(O)

Igniters have Ion flame sensing technology, allowing easy switch operation of Open Flame gas lighting. A complementary Flame Photo-sensor (usually covered) is also installed.

1. Units require manual control with a switch (installer supplied); verify igniter power input is properly wired to 24VAC transformer.
2. Verify flame photo-sensor is covered. **NOTE:** When testing during daylight, flame photo-sensor must be covered. For more reliable dual flame sensor detection, remove cover from flame photo-sensor when unit lights; otherwise, keep sensor covered.
3. If using optional flame photo-sensor (sensor uncovered), check alignment. Verify sensor is pointed up toward the yellow part of the flame. If necessary, apply sheath to flame sensor to block out extraneous light.
4. Check alignment of ignition probe; see Probe Alignment.
5. Check the gas line for leaks using bubble water solution or a gas detector around the fittings. If any leaks are present, correct them before powering the igniter. Turn on the gas.
6. Verify manual gas valve is in the open position.
7. Proceed to Operational Checkout instructions.

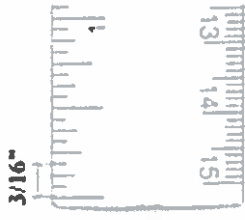
Igniter Installation

KNIGHTRONIX™ DIRECT WIRE PROBE ALIGNMENT FOR OPEN FLAME GASLIGHT

The Direct Wire ignition probe runs directly from the spark transformer to the spark gap at the side of the burner slit.



Probe within
Flame Boundary



Probe Gap

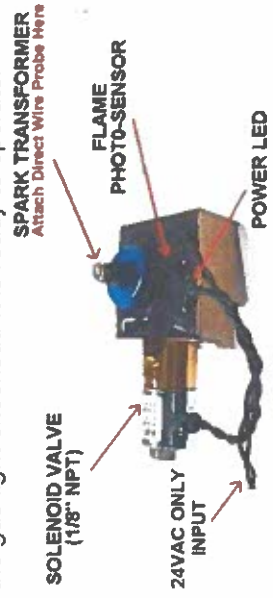
Final Probe Alignment:

Align the Direct Wire Probe™ so it is just within the Flame Boundary and perpendicular to the slit near the base of the burner tip; the probe gap should be approx. 3/16" - 1/4" for proper sparking. The probe wire should not extend out in front of the burner more than 1/4" (avoid having a large loop at the end of the wire.) Probe should be slightly bent around to the side (away from burner) so that the spark will come off the side of the wire; direct the spark to the slit area of the brass tip. It is important that wire sparks from the side rather than the end of the wire, the igniter will not light reliably if the wire sparks from the end. The probe needs to be securely attached to the post. To avoid damaging spark transformer, do not over-tighten nut, use 6 inch pounds or less.

For questions or technical support please call 651-636-1008.

24VAC Gas Light Igniter with Ion Flame Sensor Model: KNA1-24AI-F-S-(O) Operational Checkout

1. Turn on switch to power igniter; the green Power LED will light up.
2. Unit will spark once; solenoid valve will click open.
3. Sparks will appear across the spark probe to the burner tip (open flame set-ups) and the gas light shall light.
4. Blow the flame out and verify it relights consistently; try blowing flame out 8-10 times, letting it burn 5-10 sec. each time.
5. If unit does not light, verify manual valve is open; verify flame photo-sensor is covered and recheck probe alignment. **Tip:** It is best to align probe while you have a flame; manually light if necessary.
6. To turn unit off, you must turn off the switch to the light.
7. This completes the gas light checkout. It is ready to operate.



Operational Checkout

Final Set-up

TRADITIONAL LIGHT

A style such as one of these.

Bevolo traditional lights harken back to simpler times and intergenerational legacies. Still giving love to the old-school styles, modern artisans at Bevolo have perfected and preserved copper lantern manufacturing techniques that are nearly a century old. When fused with only the most refined contemporary metals, our traditional lights have the capacity to brighten any garden, entrance, foyer, walkway, and more for generations of new traditions to come.



FRENCH QUARTER®

Original Bracket



WILLIAMSBURG

Original Bracket



GOVERNOR®

Original Bracket



LONDON STREET

Original Bracket

Plan is to either mount a gas lantern on the ⊕ side of front door and possibly at side ramp entrance and/or add a hanging gas lantern ceiling mount as in photos on next page.



PENDANT COLLECTION

Marigny Pendant Pulley Cord



LONDON STREET

Hanging Chain



FRENCH QUARTER®

Hanging Chain



INDUSTRIAL LIGHTING

Warehouse District Hanging Stem



PENDANT COLLECTION

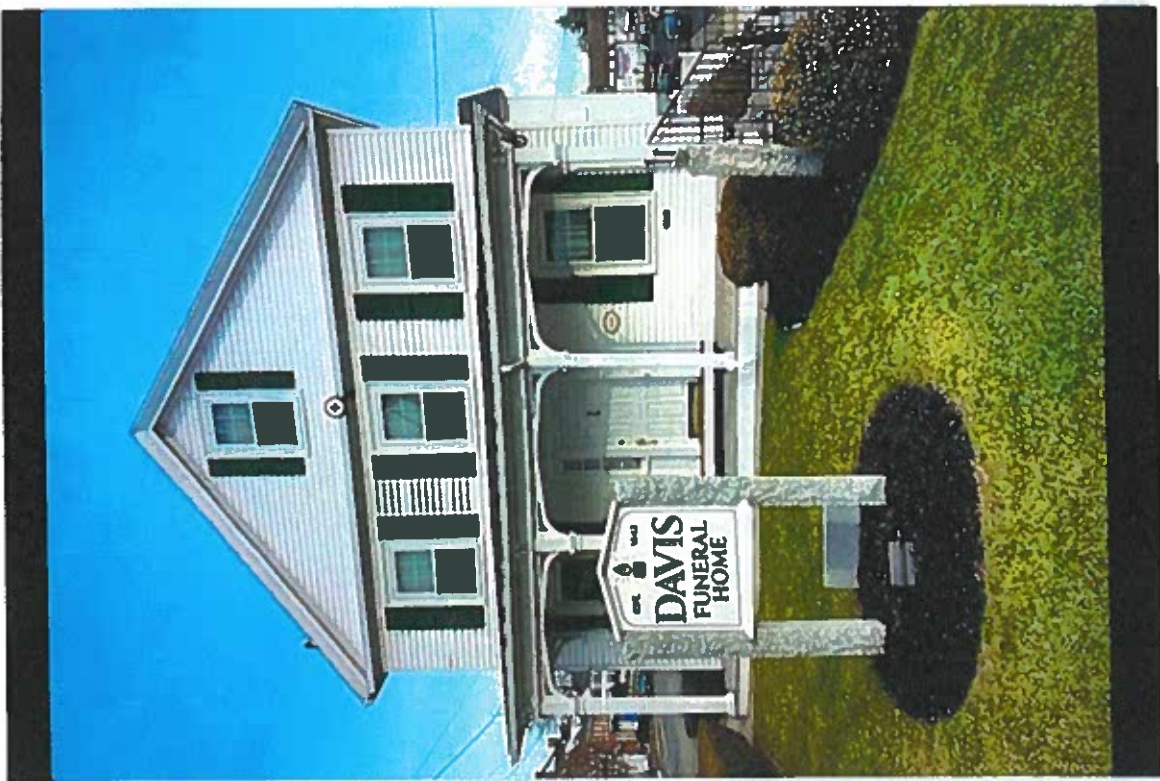
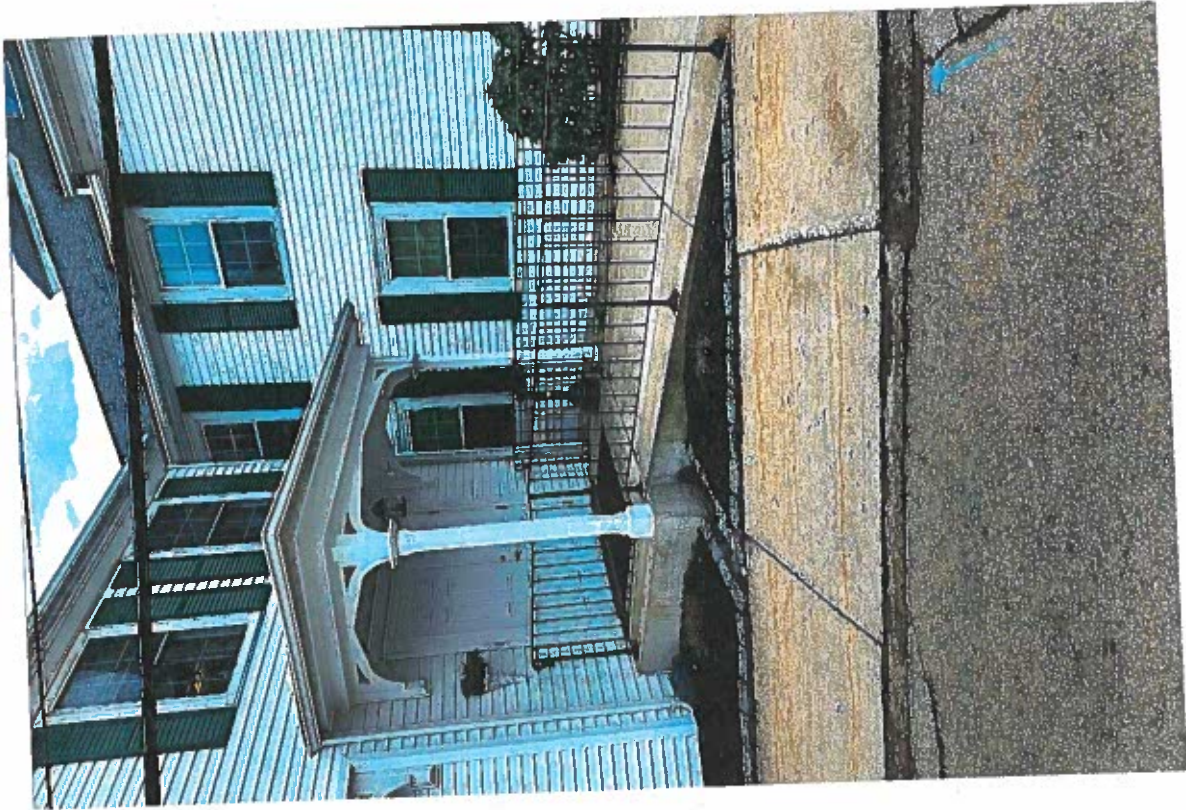
Eames Pendant Pulley Cord

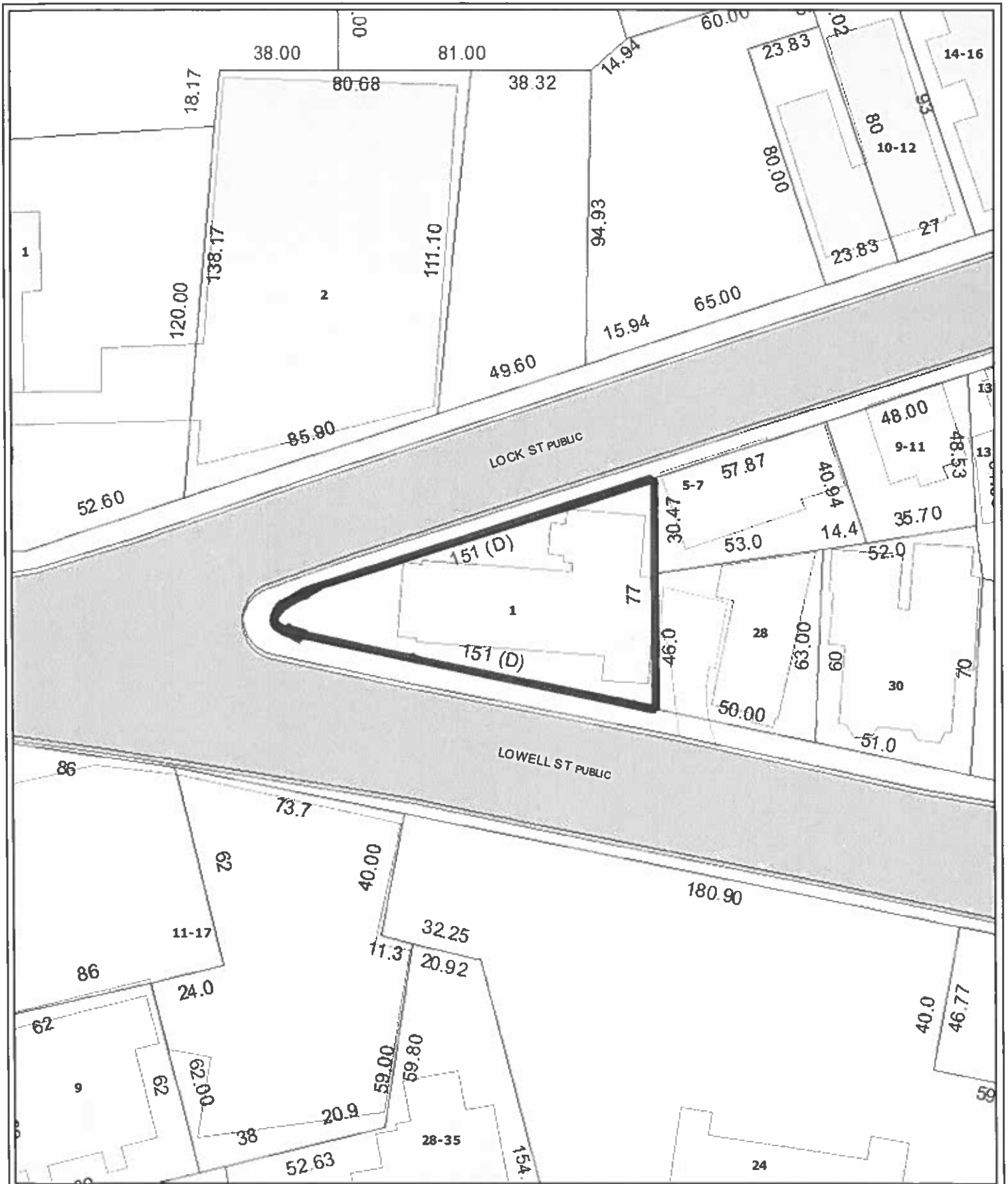


FRENCH QUARTER®

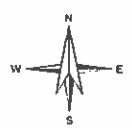
Hanging Stem







1 Lock St





1 Lock St

