

City of Nashua, NH 2020-2025 Consolidated Plan

For
HUD Programs, including the
Community Development Block Grant and
HOME Investment Partnership Program



The Consolidated Plan Process

- Develop a 5-year [Consolidated Plan](#)
- Create an [Action Plan](#) for each of the 5 years
- Select eligible activities that meet a National Objective
- Oversee the activities (contracts, progress, etc)
- Enter Results into IDIS
- Report end of year accomplishments ([CAPER](#))



What is in the ConPlan?

Housing Needs & Market Analysis:

- Housing units with problems (defects)
- Housing Cost burden
- Type of HH's in need of housing (i.e. single person, disabled, victims of DV)
- HH's at imminent risk of homelessness (characteristics of housing instability)/homeless needs
- Type of housing vs. types of households
- Affordability of Housing
- Public Housing

Community & Economic Development:

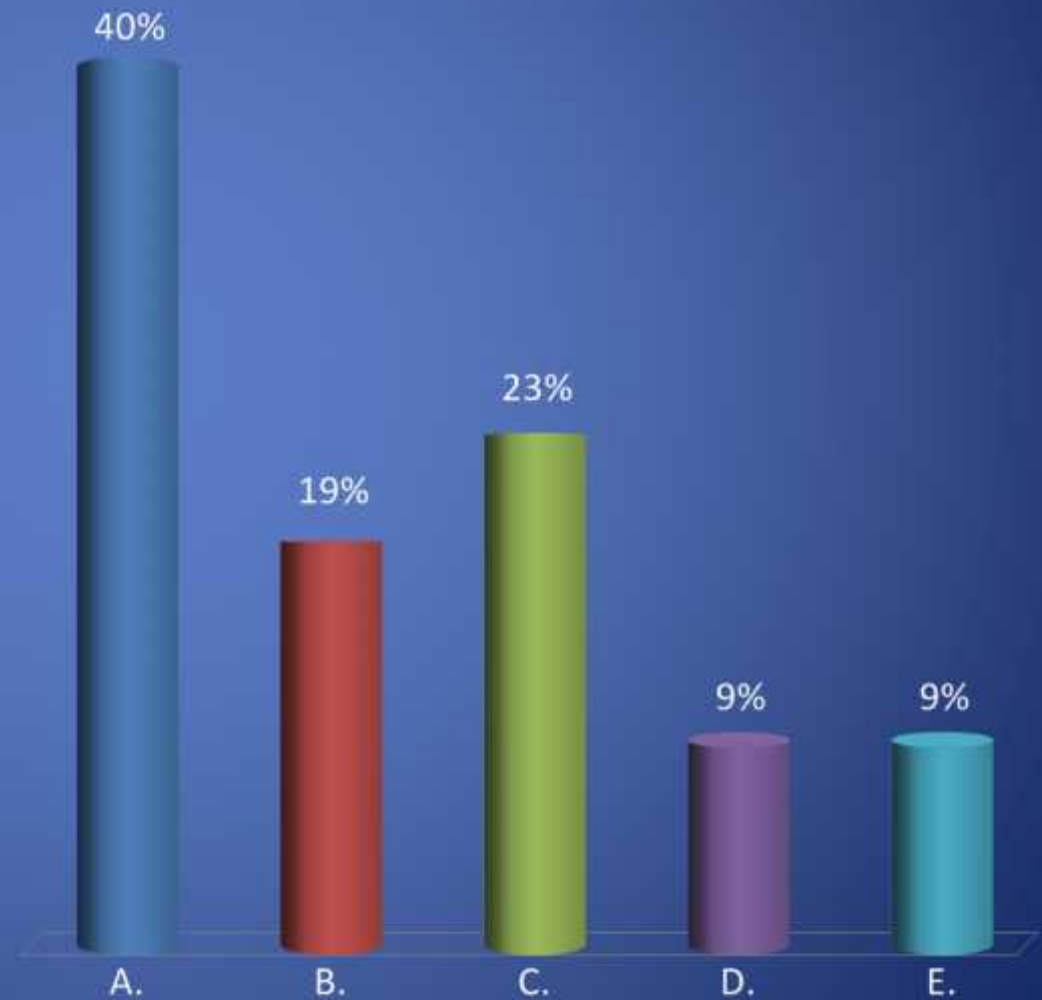
- Need for improving public facilities and services
- Need for improving community facilities
- Labor Force analysis – jobs available, educational attainment, skills, wages
- Areas of disproportionate need

How do we prioritize needs?

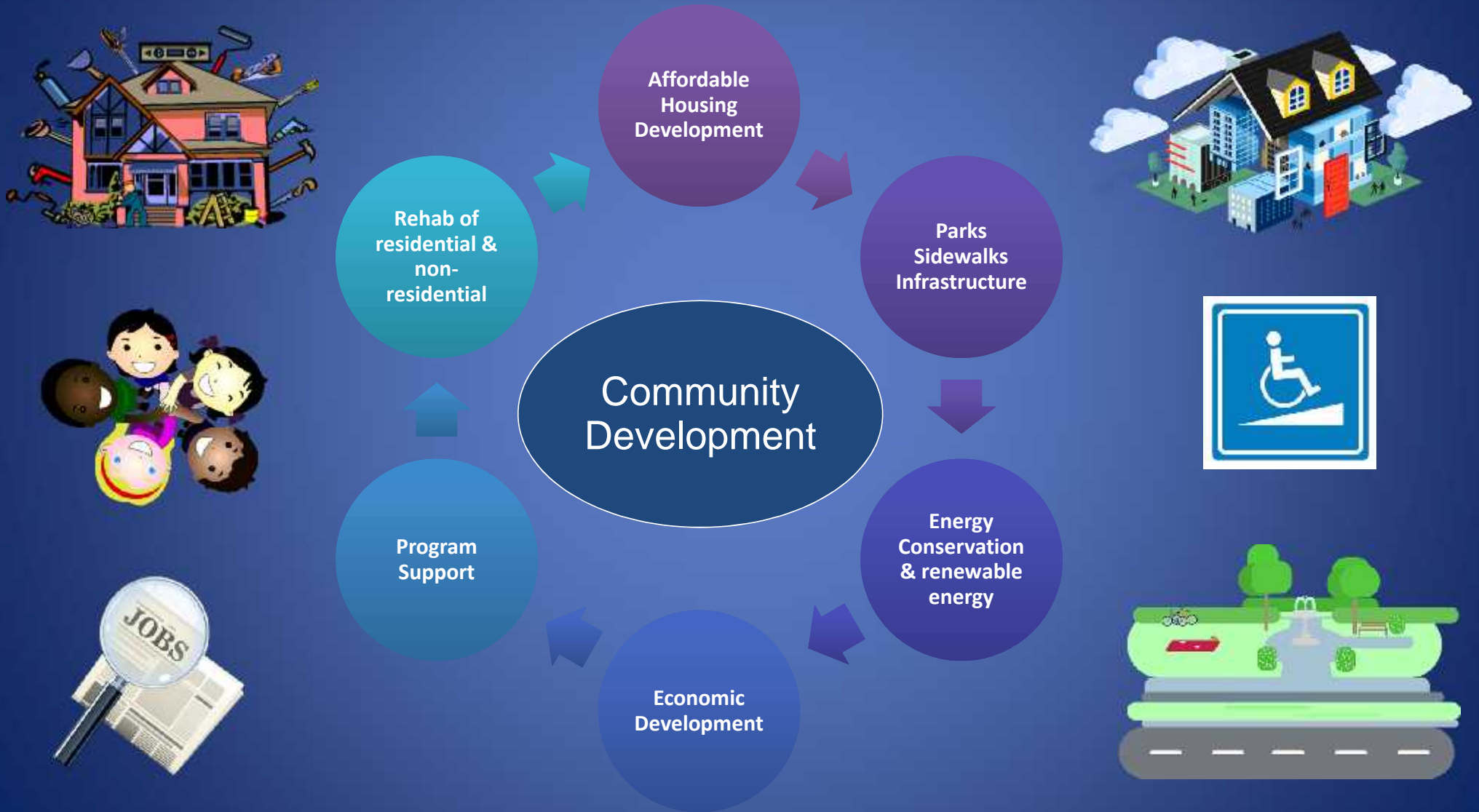
- Stakeholder input
- Community surveys
- Resident surveys
- Other recent plans & studies
 - NH Housing Finance Authority
 - Nashua Regional Planning Commission
 - GNCOC
 - United Way
 - Neighborhood & strategic plans
 - And more!

Practice Poll – What is your favorite dessert?

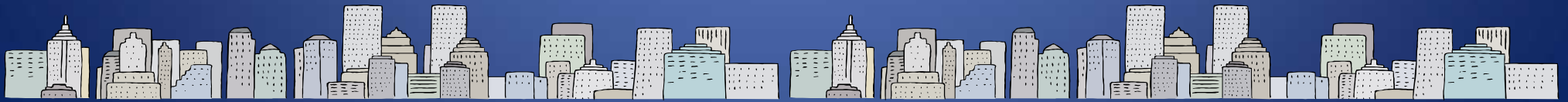
- A. Ice Cream
- B. Cake
- C. Brownies
- D. Pie
- E. Fruit



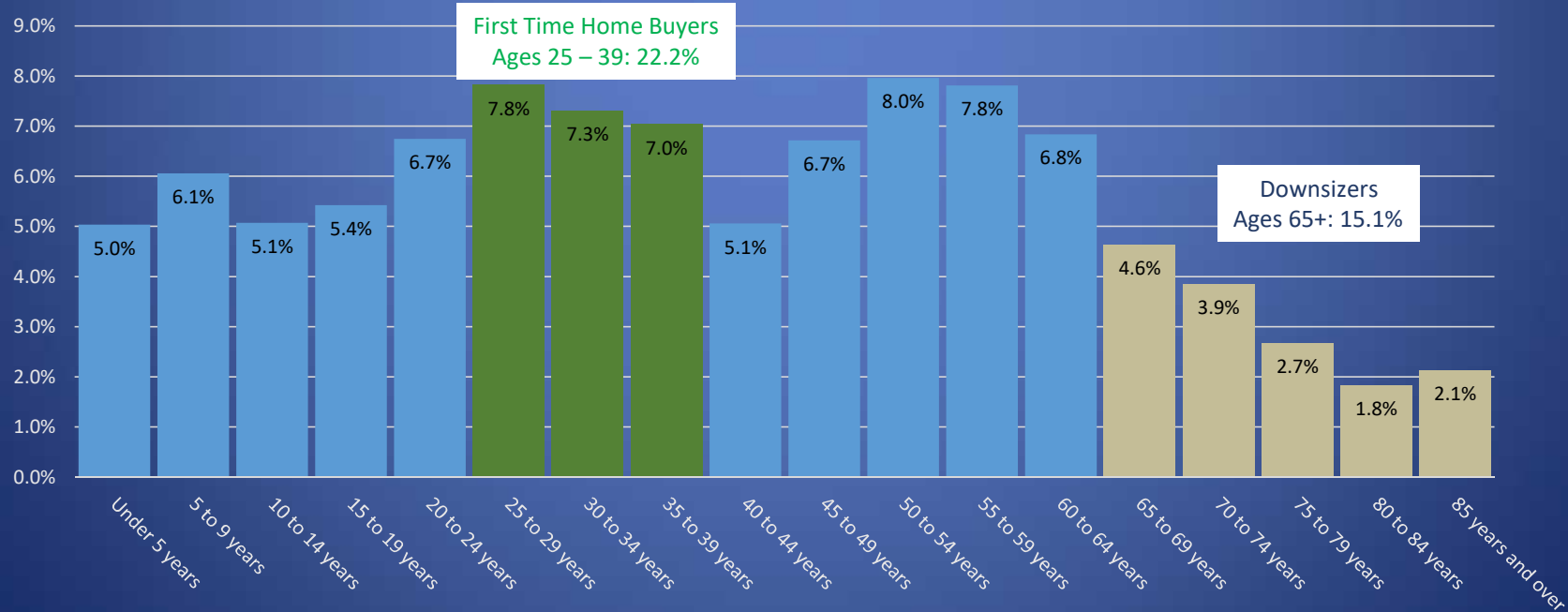
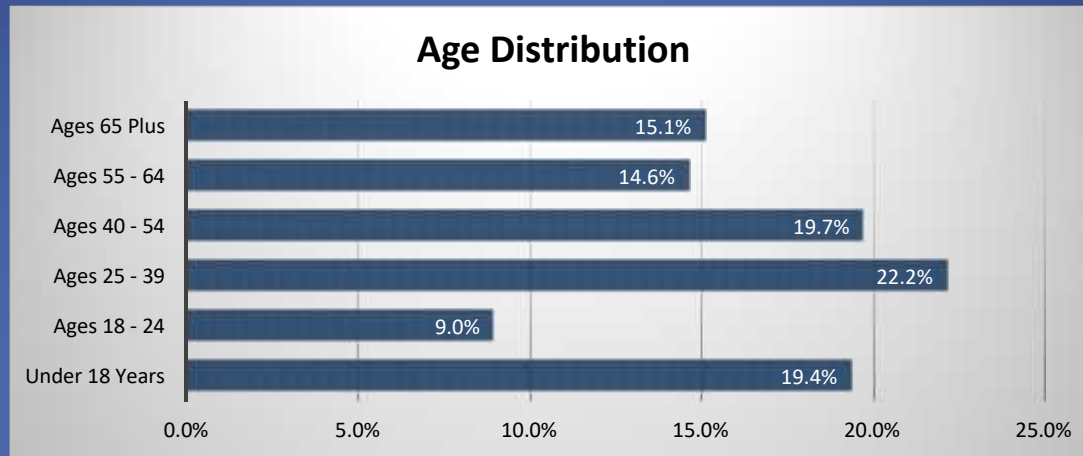
What can ConPlan funds do?



10-year Funding History



Demographic Summary - Age

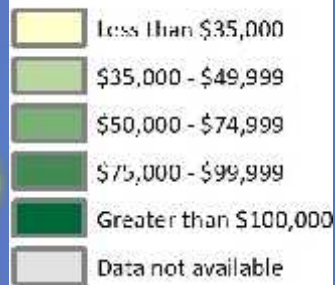


Income by Tract

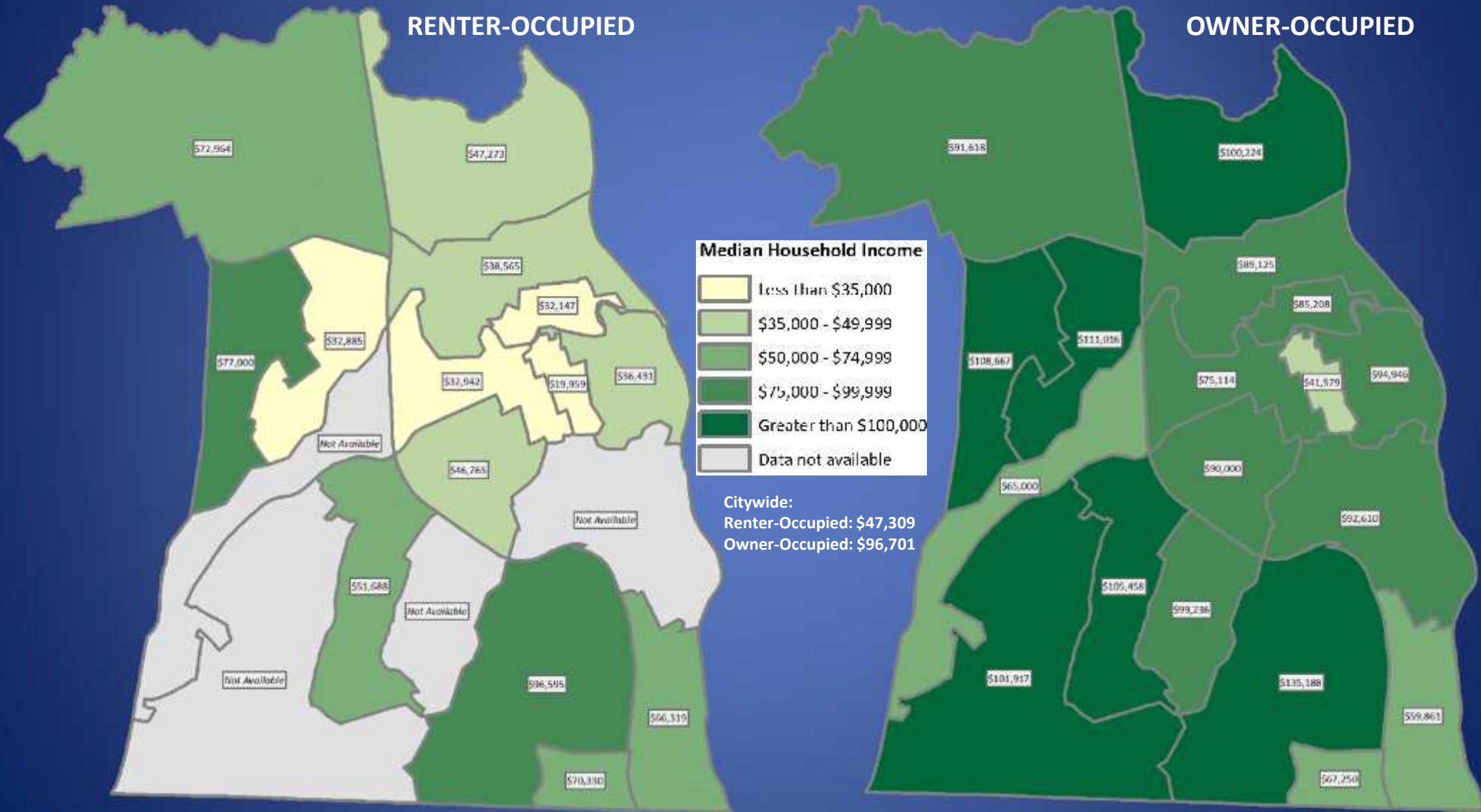
RENTER-OCCUPIED

OWNER-OCCUPIED

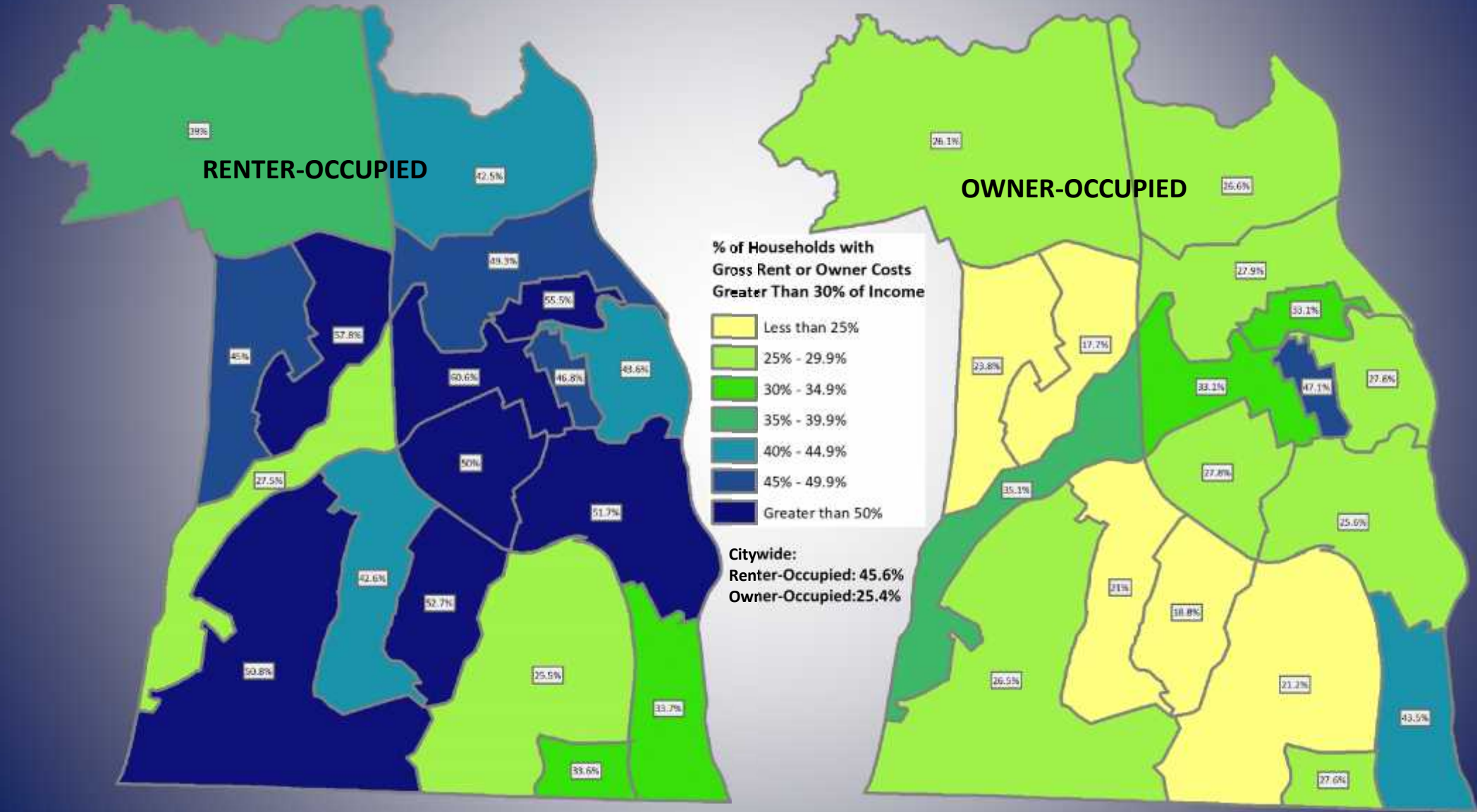
Median Household Income



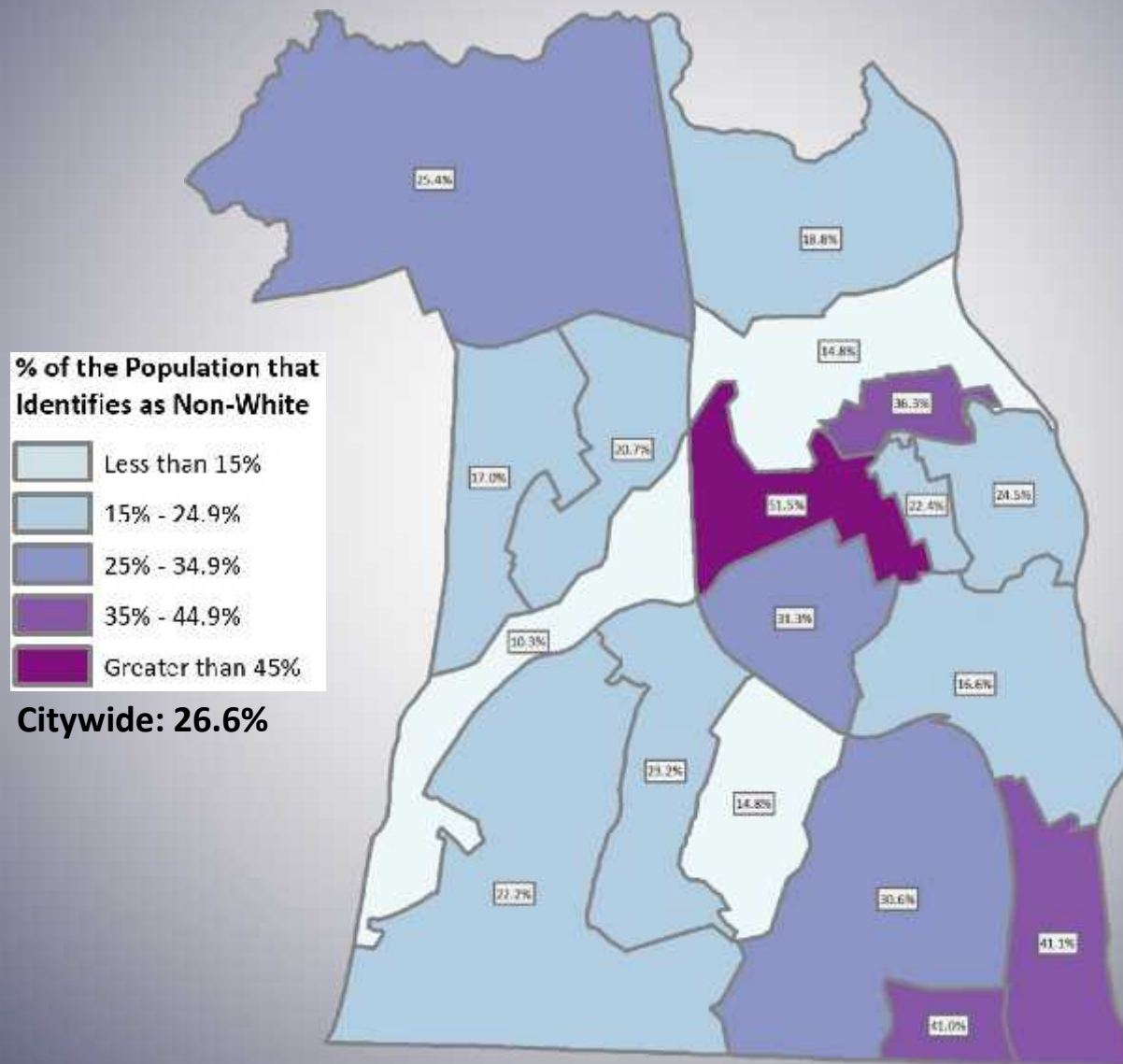
Citywide:
 Renter-Occupied: \$47,309
 Owner-Occupied: \$96,701



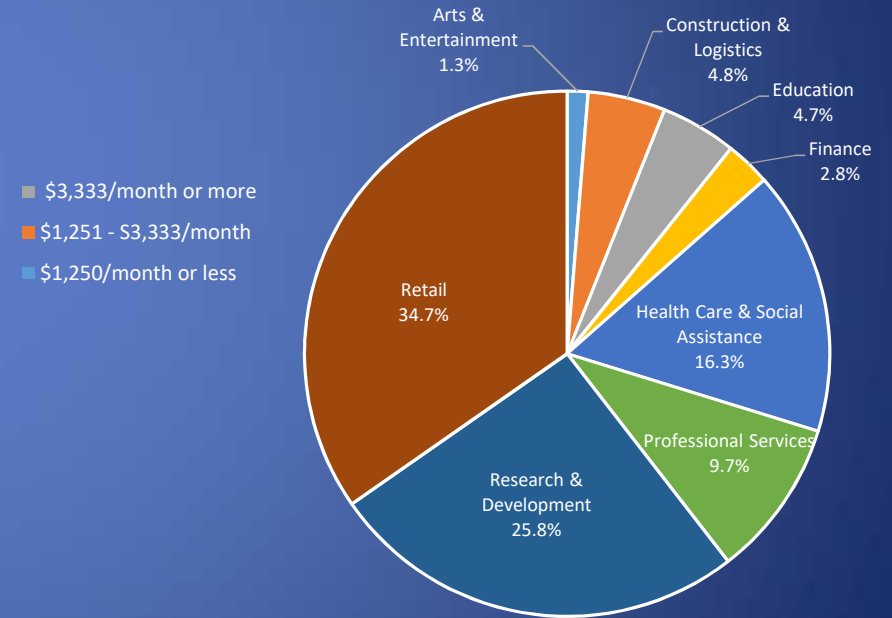
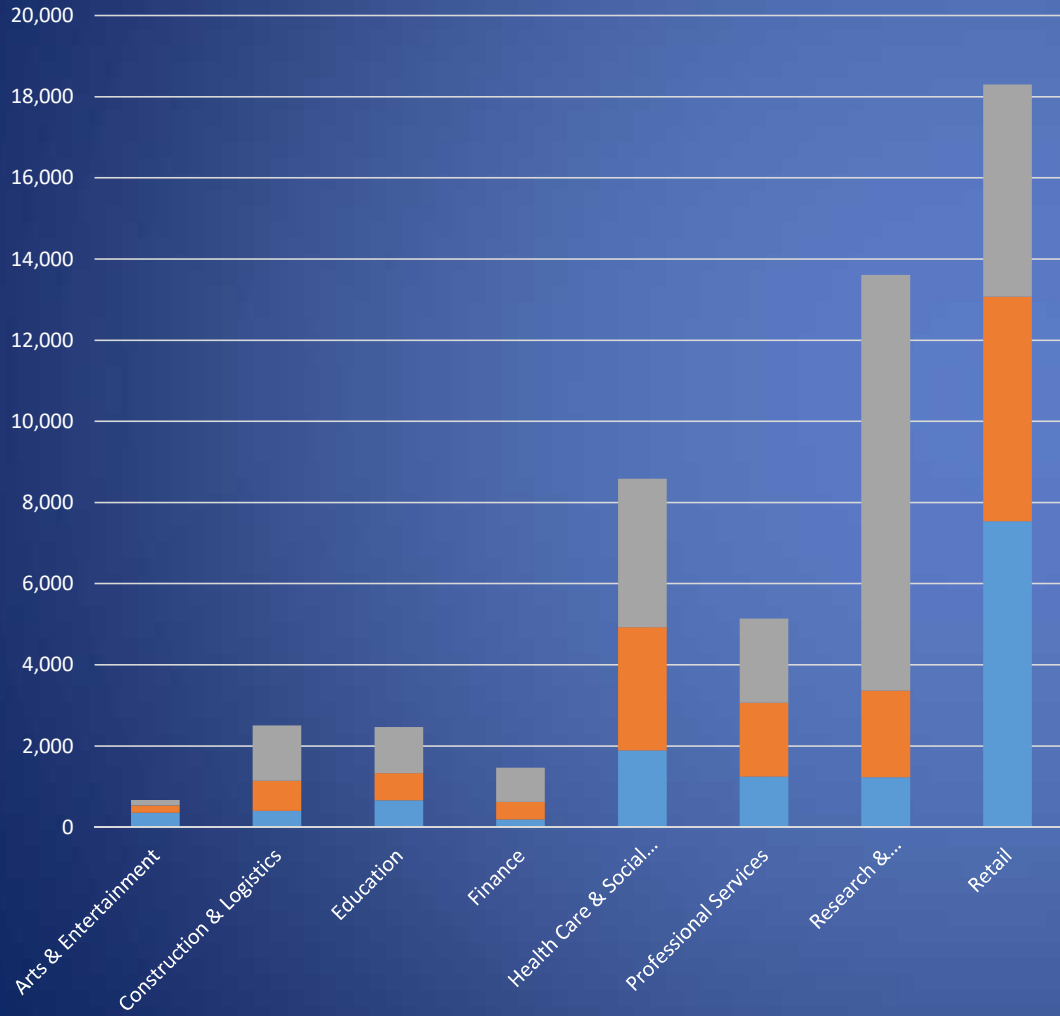
Housing Cost Burden



Race & Ethnicity



Jobs in Nashua by Industry & Salary



Areas of Concern

The data shows many areas of concern for Nashua's inner city...

- High concentration of poverty
- High housing cost burden
- High ethnicity concentrations
- High % of rental units, oldest housing stock
(also most affordable)

Areas of Concern Factors: Pop age 75+, Minority pop, Single parents w/ children, HH w/o access to vehicle, Poverty level, Limited English Proficiency, Rent exceeds 50% of income, Disabled population



Ranking Needs

Using data and real-life experiences:

- What are the greatest housing needs?
- Who has the greatest housing needs?
- What are the community development needs?
- How do we serve homeless individuals?
- What are the highest needs for the limited public service (operating) funds?

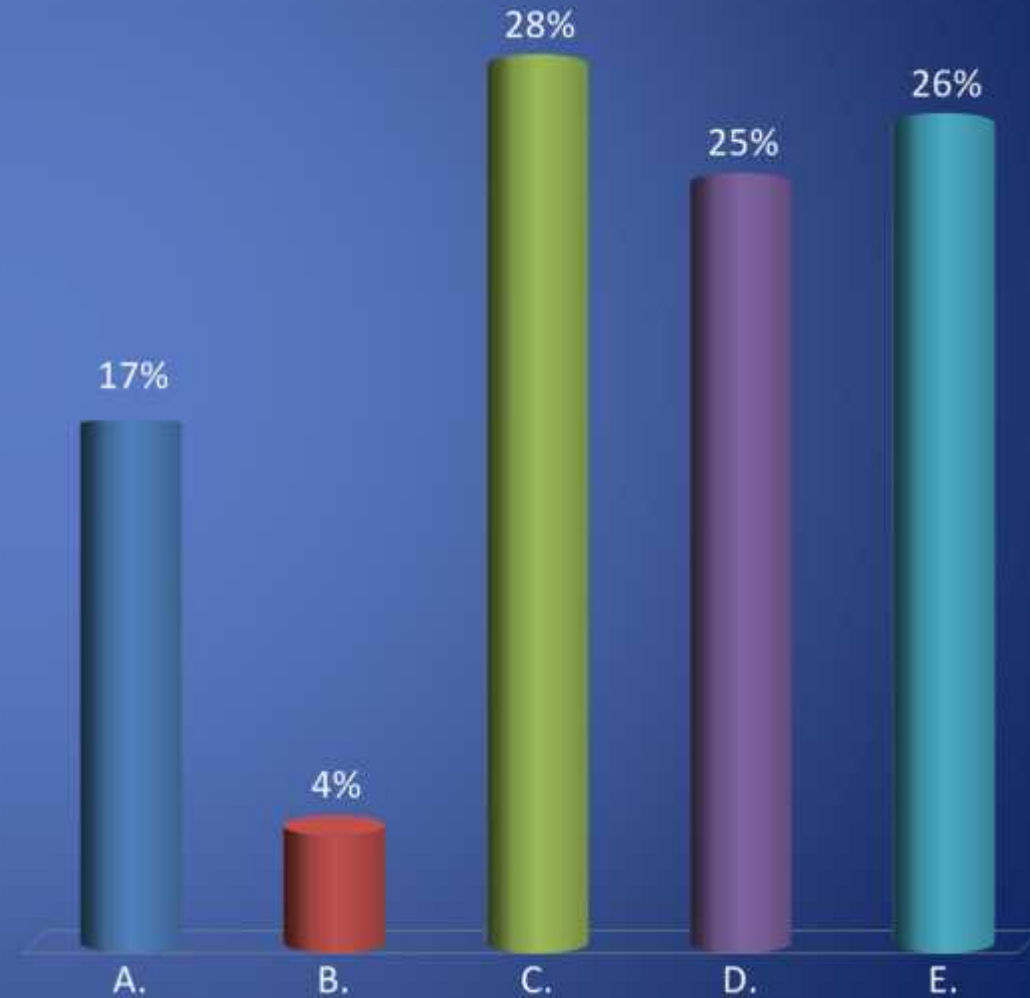
Polling

- Select up to three options per slide
- All needs are important, which do you think are most critical
- There is not enough money to solve all the problems, we need to prioritize

Let's Go!

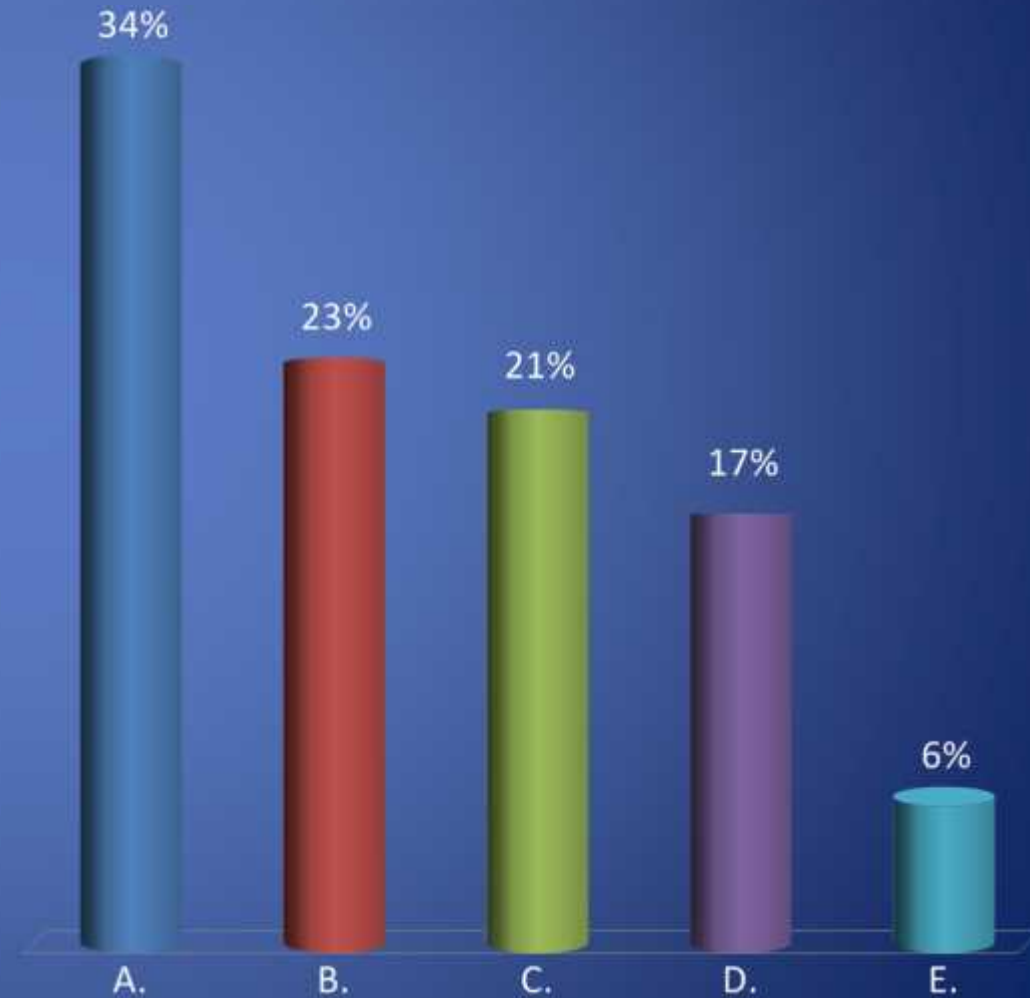
Community & Economic Development

- A. Infrastructure: Streets, sidewalks, lighting, etc.
- B. Parks, greenspace, trails
- C. Economic Development: Job training, business development, new jobs
- D. Transportation services
- E. Neighborhood facilities



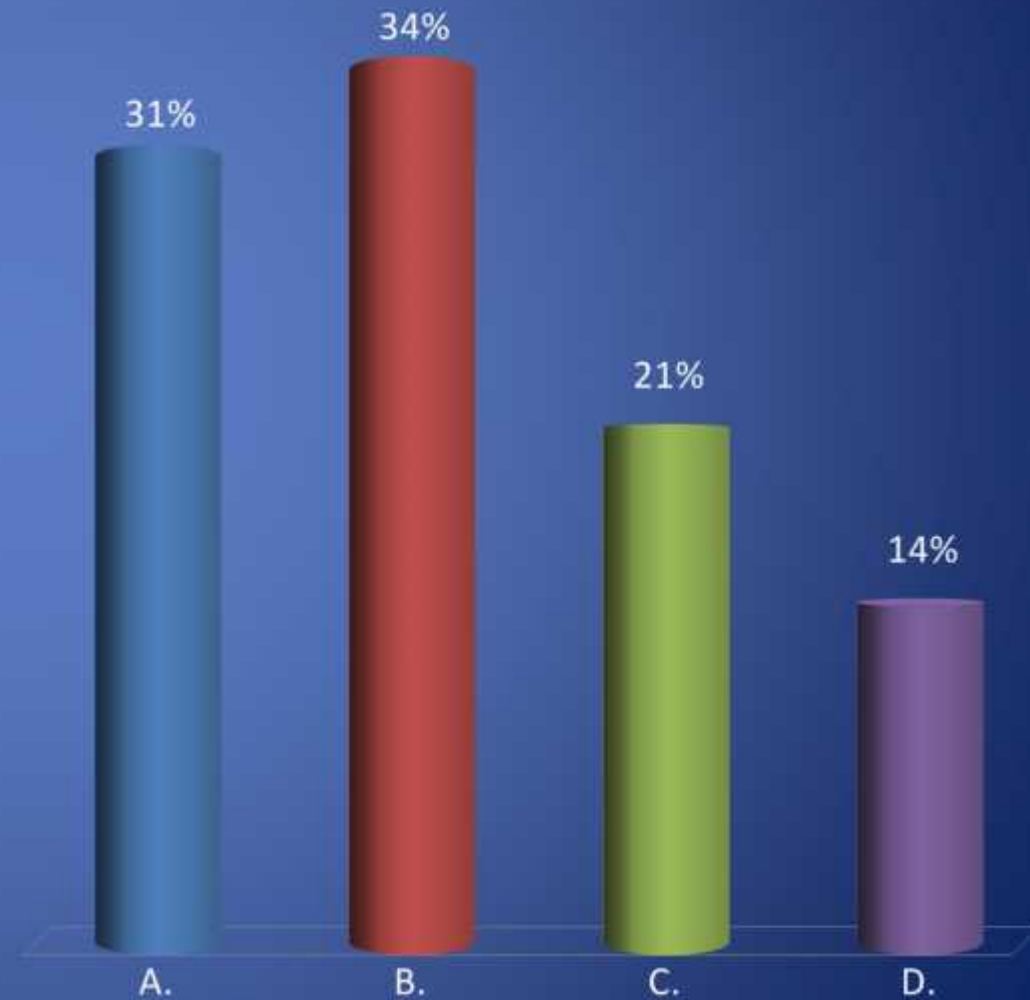
Housing

- A. Affordable rental housing development
- B. Residential Rehab: owner occupied and/or rental
- C. Homeless facilities
- D. Homeownership assistance
- E. Fair housing education



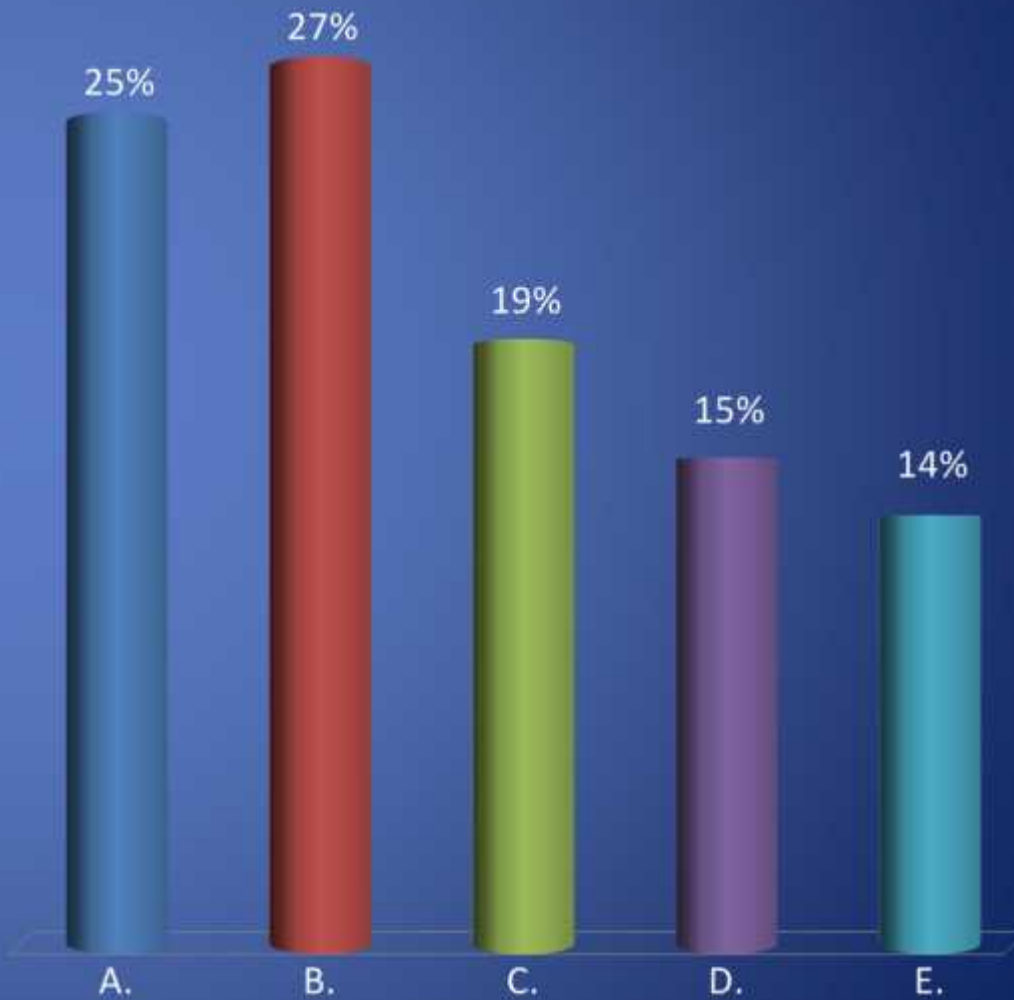
Youth

- A. Childcare programs/subsidies
- B. Services/facilities for high risk youth (abused, neglected, criminal, etc)
- C. General youth programs/facilities
- D. Services/facilities for disabled or special needs youth



Seniors

- A. Affordable housing
- B. Transportation services
- C. Health services
- D. Senior facility improvements
- E. General senior programs



Disabled/Special Needs

- A. Affordable housing
- B. Services (day programs, etc)
- C. Improvements to special care facilities
- D. Transportation services
- E. Childcare/employment training

*Special needs category includes victims of domestic violence, persons living with AIDS, mental/physically challenged, substance misusers and others

